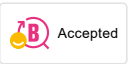
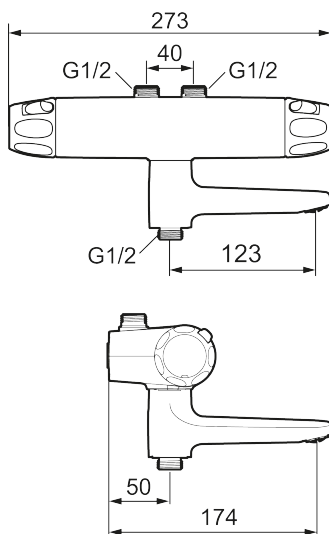




Unique characteristics



Backflow protection unit type **EB**



9000XE bath mixer

9000XE bath tub mixer is a bath tub mixer in chrome with carefully balanced pressure and temperature regulation, low weight, and noise absorbing as well as energy-saving functions. It is also equipped with double check valves for added safety.

Article number: 86970000 **Flow 3 bar:** 22.7 l/m

Description: Chrome, 40 c/c, pipe connection up

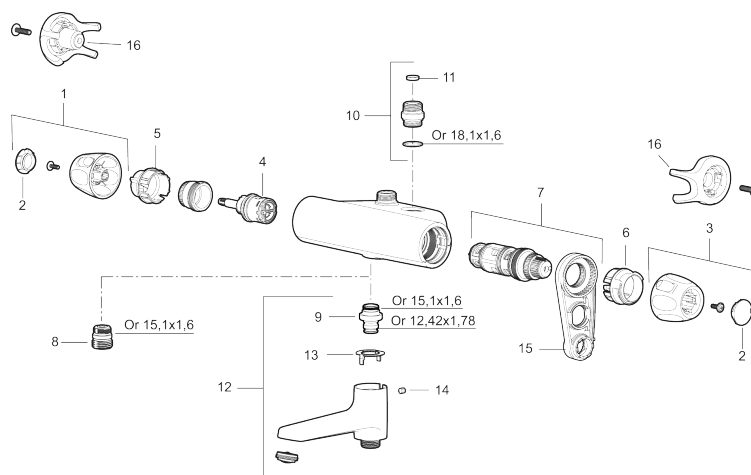
- Note! 40 c/c
- Pressure balanced thermostatic mixer
- Swivel spout with built-in diverter
- With ceramic sealed headwork
- With wall fixing
- Temperature handle with safety stop at 38°C
- With Eco-function
- Lead Free material
- Approved non-return valves, EN-Standard EN1717
- Note! Not for Vaska

PRODUCT DESCRIPTION

9000XE bath mixer

9000XE bath tub mixer is a bath tub mixer in chrome with carefully balanced pressure and temperature regulation, low weight, and noise absorbing as well as energy-saving functions. It is also equipped with double check valves for added safety.

Article number: 86970000



Sparepartlist

| NO. | FMM NO. | RSK | DESCRIPTION |
|-----|------------|---------|--|
| 1 | S600083 | 8218917 | On/off handle, complete, krom |
| 1 | S600083.75 | 8218919 | On/off handle, complete, brushed chrome |
| 2 | S600116 | 8218920 | End cover, chrome |
| 2 | S600116.75 | 8218922 | End cover, brushed chrome |
| 3 | S600082 | 8218914 | Temperature handle, complete, chrome |
| 3 | S600082.75 | 8218916 | Temperature handle, complete, brushed chrome |
| 4 | S600020 | 8441462 | Reversible headwork shower mixer 12 l/min, with service tool |
| 4 | S600269 | 8387232 | Reversible headwork shower mixer 12 l/min |
| 4 | S600021 | 8441463 | Reversible headwork bath mixer 22 l/min, with service tool |
| 4 | S600270 | 8387233 | Reversible headwork bath mixer 22 l/min |
| 5 | S600086 | 8439710 | Stop ring, standard |
| 6 | S600087 | 8439711 | Scalding protection ring |
| 6 | S600026 | 8439708 | Scalding protection ring, max 42 °C |
| 7 | S600084 | 8439709 | Thermostatic cartridge, complete, incl. service tool |
| 7 | S600271 | 8397030 | Thermostatic cartridge, complete, without service tool |
| 8 | S600088 | 8439712 | Nipple M18x1–G1/2 for shower mixer |
| 9 | 39754000 | 8591969 | Nipple M18x1 with o-ring for bath mixer |

| NO. | FMM NO. | RSK | DESCRIPTION |
|-----|------------|---------|---|
| 10 | 59820800 | 8591970 | Inlet connector |
| 11 | 38632006 | 8590311 | Filter |
| 12 | S600077 | 8241000 | Swivel spout with integrated diverter, chrome |
| 12 | S600077.75 | 8357750 | Swivel spout with integrated diverter, brushed chrome |
| 13 | 38521000 | 8295345 | Stop ring |
| 14 | 38086000 | 8439701 | Locking screw |
| 15 | S600298 | 3870203 | Service tool |
| 16 | S600105 | 8439713 | Care-handle, black, 2 pcs |