

9000XE head shower kit

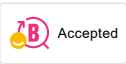
9000XE head shower kit is a head shower kit in chrome. The telescopic shower bar allows the wall bracket's height to be adapted to the specific bathroom's ceiling height, as well as to the user's height and/or the preferred distance to the shower head.

This product is LEED certified, which means it meets the flow rate requirements applicable to certain new buildings and conversions.

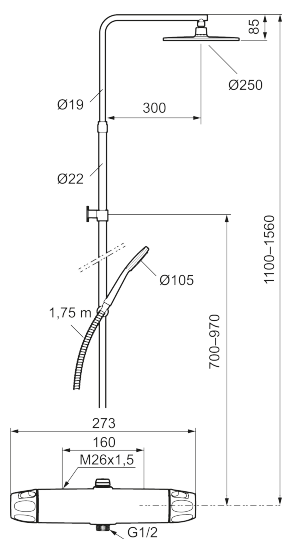
Article number: 86831000 **RSK:** 8283282 **Flow 3 bar:** 6.0 l/m

Description: Chrome, 160 c/c, LEED/BREEAM compliant

Unique characteristics



Backflow protection unit type



- Note! 160 c/c
- Safety mixer 9000XE and head shower set 9000XE
- With reversible headwork
- Anti lime-scale head- and hand shower
- Shower bar with slider and wall bracket with sealing
- Shower pipe can be shortened if required
- Wall bracket freely adjustable in height, 700–970 from connection and 50–100 mm from wall, 2x20 mm spacers included, with sealing, hidden pipe joint
- Lead Free material

PRODUCT DESCRIPTION

9000XE head shower kit

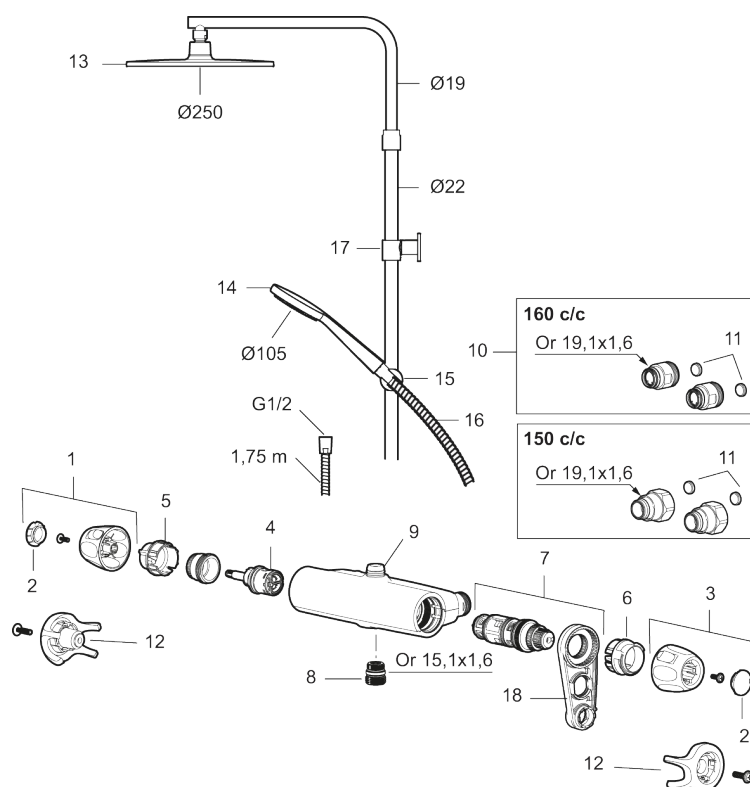
9000XE head shower kit is a head shower kit in chrome.

The telescopic shower bar allows the wall bracket's height to be adapted to the specific bathroom's ceiling height, as well as to the user's height and/or the preferred distance to the shower head.

This product is LEED certified, which means it meets the flow rate requirements applicable to certain new buildings and conversions.

Article number: 86831000

RSK: 8283282



Sparepartlist

| NO. | FMM NO. | RSK | DESCRIPTION |
|-----|------------|---------|--|
| 1 | S600083 | 8218917 | On/off handle, complete, krom |
| 1 | S600083.75 | 8218919 | On/off handle, complete, brushed chrome |
| 2 | S600116 | 8218920 | End cover, chrome |
| 2 | S600116.75 | 8218922 | End cover, brushed chrome |
| 3 | S600082 | 8218914 | Temperature handle, complete, chrome |
| 3 | S600082.75 | 8218916 | Temperature handle, complete, brushed chrome |
| 4 | S600020 | 8441462 | Reversible headwork shower mixer 12 l/min, with service tool |
| 4 | S600269 | 8387232 | Reversible headwork shower mixer 12 l/min |
| 5 | S600117 | 8439714 | Stop ring, for two outlet (down and up) |
| 6 | S600087 | 8439711 | Scalding protection ring, max 50°C |

| NO. | FMM NO. | RSK | DESCRIPTION |
|-----|------------|---------|--|
| 7 | S600084 | 8439709 | Thermostatic cartridge, complete, incl. service tool |
| 7 | S600271 | 8397030 | Thermostatic cartridge, complete, without service tool |
| 8 | S600088 | 8439712 | Nipple M18x1–G1/2 for shower mixer |
| 9 | S600112 | 8920116 | Nipple M18x1 |
| 9 | S600265 | | Nipple M18x1, with flow regulator 9 l/min |
| 10 | 59800800 | 8592005 | Inlet connectors, 160 c/c |
| 11 | 38632006 | 8590311 | Filter |
| 12 | S600105 | 8439713 | Care-handle, black, 2 pcs |
| 13 | S600092 | 8237548 | Shower head, chrome |
| 13 | S600092.75 | 8237550 | Shower head, brushed chrome |
| 14 | S600330 | 8233133 | Hand shower, chrome |
| 14 | S600091.75 | 8233003 | Hand shower, brushed chrome |
| 15 | S600093 | 8239502 | Slider, chrome |
| 15 | S600093.75 | 8284780 | Slider, brushed chrome |
| 16 | S600109 | 8252036 | Shower hose, chrome |
| 16 | S600109.75 | 8252038 | Shower hose, brushed chrome |
| 17 | S600094 | 8221921 | Wall bracket, chrome |
| 18 | S600298 | 3870203 | Service tool |