



9000E wash trough mixer

An optimal fusion of design and function. The FM Mattsson 9000E range ushers in a new generation of mixers that are environmentally engineered down to the last detail. The mixer brings beauty and technical perfection to your bathroom. Even in its basic version, the mixer has unique functions that save energy without compromising on comfort.

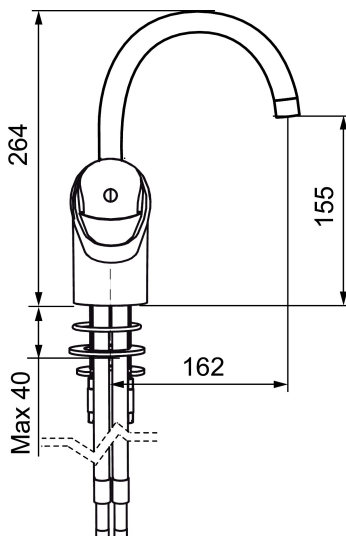
Article number: 81180010

Description: Chrome, connection nut G3/8"

Unique characteristics

- Cold Start
- Ceramic cartridge with soft closing function
- Adjustable flow control and temperature limiter
- Fixed spout
- Soft PEX® hoses (stainless steel braided)

Backflow protection unit type

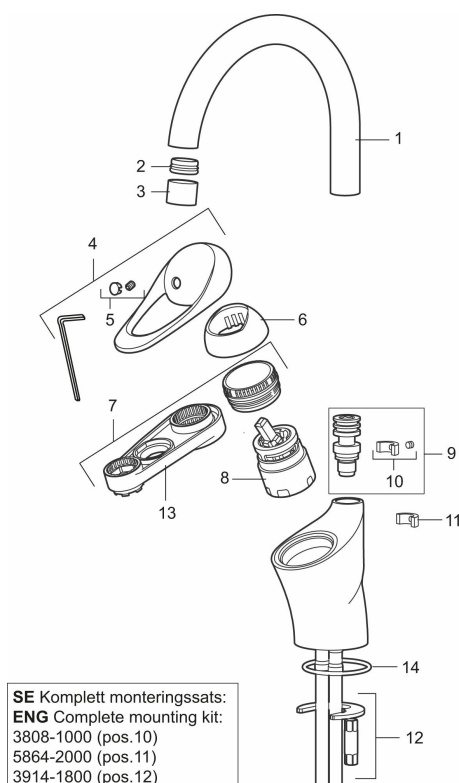


PRODUCT DESCRIPTION

9000E wash trough mixer

An optimal fusion of design and function. The FM Mattsson 9000E range ushers in a new generation of mixers that are environmentally engineered down to the last detail. The mixer brings beauty and technical perfection to your bathroom. Even in its basic version, the mixer has unique functions that save energy without compromising on comfort.

Article number: 81180010



Sparepartlist

NO.	FMM NO.	RSK	DESCRIPTION
1	58630000	8154077	Spout for wash through mixer
2	S600319	8280069	Aerator insert, 7–9 l/min at 300 kPa
3	29142200	8281524	Housing M22 int.
4	58500000	8591936	Lever, complete, L=90 mm
5	58510000	8591944	Cover lid with colour marking
6	58520000	8591945	Cover sleeve
7	29390000	8295356	Fastening nipple
8	S600273	8387230	Ceramic cartridge with service tool, cold start (green ring)
9	37791000	8295341	Spout nipple, complete, for fixed spout
10	38081000	8295334	Stop screw with limitation segment
11	58642000	8295339	Fixed plug, 2 pcs, (black/grey)

NO.	FMM NO.	RSK	DESCRIPTION
12	39141800		Fastening kit, for kitchen mixer without on/off valve
13	S600298	3870203	Service tool
14	37803100		O-ring 47,0x3,0, 2 pcs