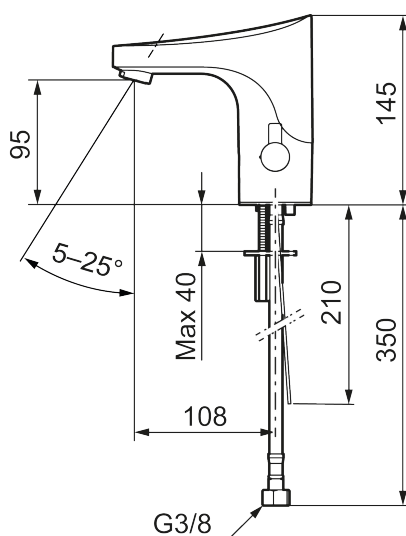




## Unique characteristics



Backflow protection unit type **EB**



## MEDICARE tronic WMS basin mixer, mains operation

**MEDICARE Tronic basin mixer is a touch-free solution that helps improve hygiene and reduce spread of infection. This mixer is available for both mains and battery operation, offering flexibility for installation in a variety of environments. The adjustable aerator can easily be adjusted so that the water jet is directed away from the push-down waste, helping to improve hygiene and reduce the risk of splashing.**

### About the collection

**MEDICARE is FM Mattsson's range of products for healthcare and care settings with high requirements for hygiene, safety and accessibility. The products are made from lead-free brass and combine a construction designed for easy cleaning with well-thought-out design, ergonomic controls and safe temperature settings.**

**With a 10-year spare parts guarantee, Medicare is a reliable, long-term choice for professional installations.**

**Article number: 16414510 RSK: 8430097 Flow 3 bar: 6.0 l/m**

**Description: Chrome, mains operation (without transformer)**

- Adjustable aerator without air admixture, constant flow at 200–600 kPa, adjustable angle 5–25°
- Flexible connection tubes in stainless steel braided Soft PEX® with 3/8" connecting nut, with protective plastic covering for improved hygiene and easier cleaning
- Hygienic design, joints kept to a minimum
- WMS mixer tap with the option of wireless connection to our Tronic WMS system or programming via a dongle.
- Hygiene flushing function for minimising bacterial growth in the water system.
- Soft closing solenoid valve
- Flush Timeout - safety shut-off to prevent flooding
- Rinse time
- Cleaning mode, time-limited shut-off for cleaning
- Equipped with system for thermal disinfection against legionella
- IP class sensor, IP67
- Approved non-return valves, EN-Standard EN1717

- Environmental friendly material, Lead free, Nickel Free

#### **Installation:**

- Temperature knob can be removed and replaced with a cover (included)
- Mains operation requires installation of the power supply FMM S600129, alternatively transformer FMM S600128
- Hole diameter Ø33,5-37 mm

#### **Functions via Tronic WMS/dongle:**

- Programmable of:
  - Flush Timeout
  - Rinse time
  - Hygiene flushing, interval and flush time
  - Maximum temperature
  - Initiation of thermal disinfection
- Additional functions with Tronic WMS:
  - Operational monitoring (flushings, water consumption and temperature, battery status, etc.)
  - Logging of all events
  - Alarm via SMS or email
  - Documentation and report function