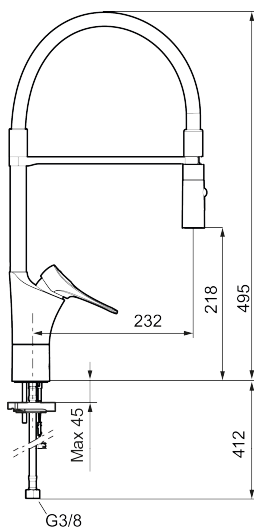




## Unique characteristics



Backflow protection unit type **EB**



## 9000XE flexi kitchen mixer

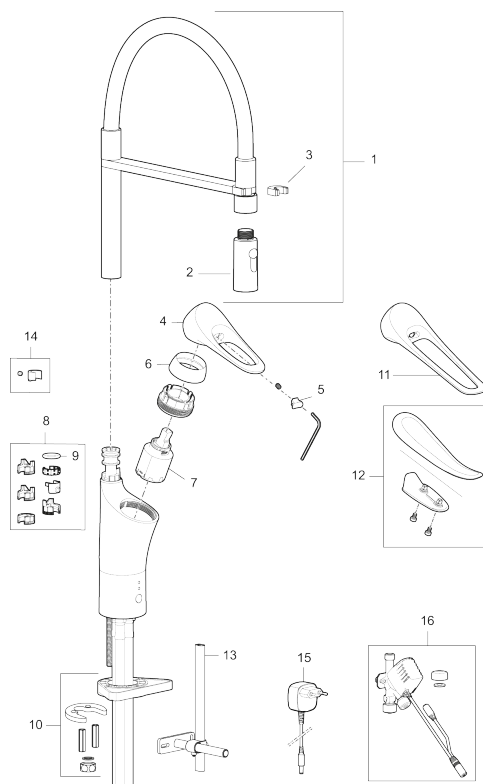
**Article number:** 86140010 **Flow 3 bar:** 6.0 l/m

**Description:** Chrome, with integrated electronic dish washer cut-off

- Cold Start
- Ceramic cartridge with soft closing function
- Adjustable flow control and temperature limiter
- Hose, limitation part for 60°, 85°, 110° or 360° included
- Nozzle with concentrated jet and handshower
- With integrated electronic dish washer cut-off, automatic shut-off after 4 or 12 hours
- Soft PEX<sup>®</sup> hoses with 3/8" connecting nut (stainless steel braided)
- Approved non-return valves, EN-Standard EN1717
- Lead Free material
- Hole diameter Ø34-37 mm

**PRODUCT DESCRIPTION**

# 9000XE flexi kitchen mixer

**Article number: 86140010**


## Sparepartlist

NO.	FMM NO.	RSK	DESCRIPTION
1	S600059	8394011	Spout, complete, chrome
1	S600059.75	8387088	Spout, complete, brushed chrome
2	S600060	8394012	Nozzle
3	S600061	8393993	Spout mount
4	S600096	8387022	Lever, complete, chrome
4	S600096.75	8387024	Lever, complete, Brushed chrome
5	S600097	8387025	Cover lid with colour marking
6	S600101	8387029	Cover sleeve, chrome
6	S600101.75	8387031	Cover sleeve, brushed chrome
7	S600100	8387028	Ceramic cartridge with tool, for kitchen mixer (LEED) and basin mixer
7	S600099	8387027	Ceramic cartridge, without tool, for kitchen mixer (LEED) and basin mixer
8	58641000	8594560	Lock kit for swivel spout
9	37801550	8295350	O-ring 15,54 x 2,62, 2 pcs
10	S600159	8387097	Fastening kit, for kitchen mixer
11	S600175	8387083	Care-lever, complete

NO.	FMM NO.	RSK	DESCRIPTION
12	S600106	8397001	Care-kit
13	S600308	8387263	Stabilizer kit
14	S600140	8387023	Stop screw with limitation segment, for fixed spout
15	S600185	8398015	Transformer 12V
16	S600184	8398014	Electronic dishwasher valve