

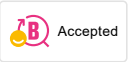
9000XE shower mixer

9000XE shower mixer in chrome is the successor to one of our best-selling shower mixers. Its design is as sophisticated as that of its predecessor, but it has been upgraded with double check valves, faster temperature regulation, lower weight and noise absorbing functions. The product can be supplemented with a tub spout.

Article number: 86858000 **RSK:** 8350390 **Flow 3 bar:** 20.0 l/m

Description: Chrome, 40 c/c, pipe connection down

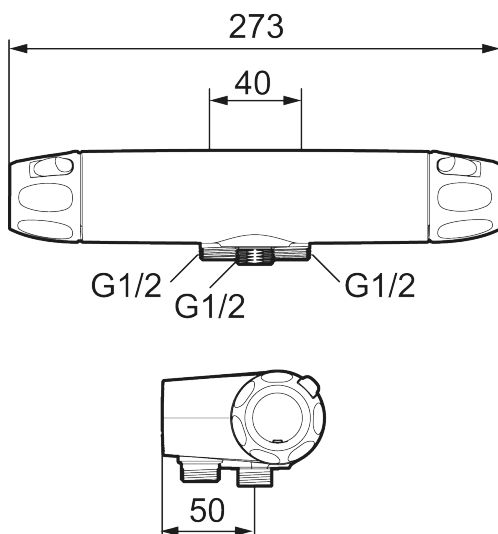
Unique characteristics



Backflow protection unit type



- Note! 40 c/c
- With shower connection down
- Pressure balanced thermostatic mixer
- With ceramic sealed headwork
- With wall fixing
- Temperature handle with safety stop at 38°C
- With Eco-function
- Lead Free material
- Approved non-return valves, EN-Standard EN1717
- Note! Not for Vaska



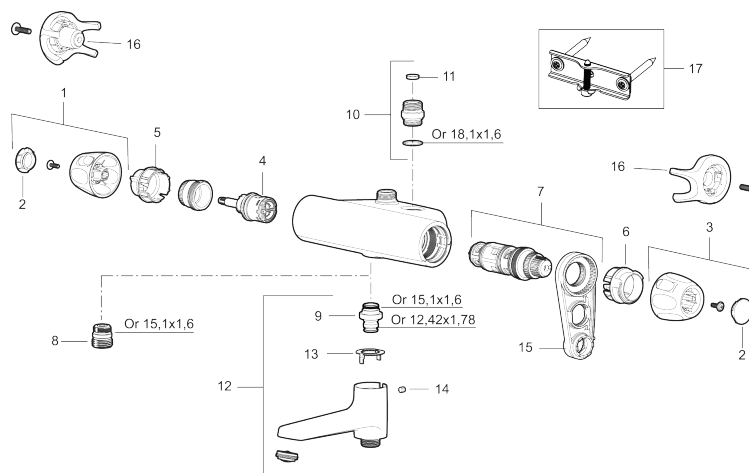
PRODUCT DESCRIPTION

9000XE shower mixer

9000XE shower mixer in chrome is the successor to one of our best-selling shower mixers. Its design is as sophisticated as that of its predecessor, but it has been upgraded with double check valves, faster temperature regulation, lower weight and noise absorbing functions. The product can be supplemented with a tub spout.

Article number: 86858000

RSK: 8350390



Sparepartlist

| NO. | FMM NO. | RSK | DESCRIPTION |
|-----|------------|---------|--|
| 1 | S600083 | 8218917 | On/off handle, complete, krom |
| 1 | S600083.75 | 8218919 | On/off handle, complete, brushed chrome |
| 2 | S600116 | 8218920 | End cover, chrome |
| 2 | S600116.75 | 8218922 | End cover, brushed chrome |
| 3 | S600082 | 8218914 | Temperature handle, complete, chrome |
| 3 | S600082.75 | 8218916 | Temperature handle, complete, brushed chrome |
| 4 | S600020 | 8441462 | Reversible headwork shower mixer 12 l/min, with service tool |
| 4 | S600269 | 8387232 | Reversible headwork shower mixer 12 l/min |
| 4 | S600021 | 8441463 | Reversible headwork 22 l/min, with service tool |
| 4 | S600270 | 8387233 | Reversible headwork 22 l/min |
| 5 | S600086 | 8439710 | Stop ring, for one outlet (down or up) |
| 6 | S600087 | 8439711 | Scalding protection ring, max 50°C |
| 6 | S600026 | 8439708 | Scalding protection ring, max 42°C |
| 7 | S600084 | 8439709 | Thermostatic cartridge, complete, incl. service tool |
| 7 | S600271 | 8397030 | Thermostatic cartridge, complete, without service tool |
| 8 | S600088 | 8439712 | Nipple M18x1–G1/2 for shower mixer |
| 9 | 39754000 | 8591969 | Nipple M18x1 with o-ring for bath mixer |

| NO. | FMM NO. | RSK | DESCRIPTION |
|-----|------------|---------|---|
| 10 | 59820800 | 8591970 | Inlet connector |
| 11 | 38632006 | 8590311 | Filter |
| 12 | S600077 | 8241000 | Swivel spout with integrated diverter, chrome |
| 12 | S600077.75 | 8357750 | Swivel spout with integrated diverter, brushed chrome |
| 13 | 38521000 | 8295345 | Stop ring |
| 14 | 38086000 | 8439701 | Locking screw |
| 15 | S600298 | 3870203 | Service tool |
| 16 | S600105 | 8439713 | Care-handle, black, 2 pcs |
| 17 | S600343 | 8397053 | Wall plate, complete |