



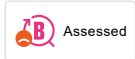
9000 kitchen mixer

The FM Mattsson 9000 kitchen mixer has a harmonious, classic design. Standard features include a hot water lock, adjustable flow control, a soft-close mechanism and a ceramic seal. These features eliminate the risk of scalding, and protect the pipes by preventing water hammering. With its popular, user-friendly design, this has been Sweden's best selling mixer for many years.

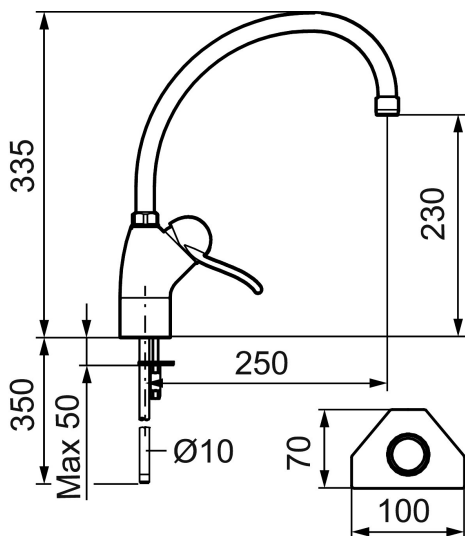
Article number: 91100000 **RSK:** 8308709 **Flow 3 bar:** 14.0 l/m

Description: Chrome, with CU Ø10 mm

Unique characteristics



Backflow protection unit type



- Ceramic cartridge with soft closing function
- Adjustable flow control and temperature limiter
- Swivel spout 110°
- Hole diameter Ø28 mm

NO.	FMM NO.	RSK	DESCRIPTION
7	38170000	8154016	Spout, chrome
8	29142200	8281524	Housing M22 int.
9	59200000	8154050	Spout Ø22, chrome
10	59303000	8591821	Soft closing headwork, complete, with lever 110 mm, chrome
11	37802850	8141748	O-ring 42,2x3,0
12	39101500	8591858	Connection pipes, CU 10x392, raw brass (for mixers without on/off valve)
13	39141000	8186888	Fastening kit, for mixers without on/off valve
14	38740100	8295344	Plug M10x1
15	29102419	8909483	Aerator insert, 11-15 l/min at 300kPa
16	38871000	8154308	Sleeve nipple, chrome
17	59392009	8141761	Limitation rings