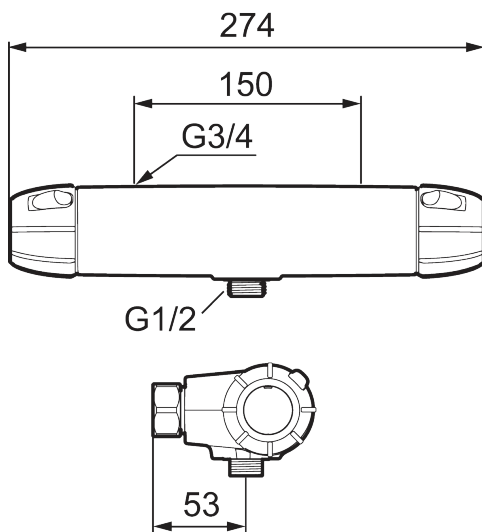




## Unique characteristics

Backflow protection unit type



## 9000E shower mixer

An elegantly crafted mixer down to the finest detail. From the gleaming chrome finish to the pressure-balanced thermostat inside – every part is designed to provide you with an energy-efficient and stylish solution. You get a consistent temperature and smooth water flow in all situations, making it a safe and reliable choice for both young and old.

### About 9000E

Timeless, classic design with a range of smart, energy-saving features. That's why the 9000E series is the natural choice in so many homes and public spaces. A stylish way to save both water and energy. All mixers in the series are certified and comply with current building regulations.

**Article number:** 82108100 **Flow 3 bar:** 22.9 l/m

**Description:** Chrome, 150 c/c

- With shower connection down
- Pressure balanced thermostatic mixer
- With ceramic sealed headwork
- Temperature handle with safety stop at 38°C
- With Eco-function
- Approved non-return valves, EN-Standard EN1717

# PRODUCT DESCRIPTION

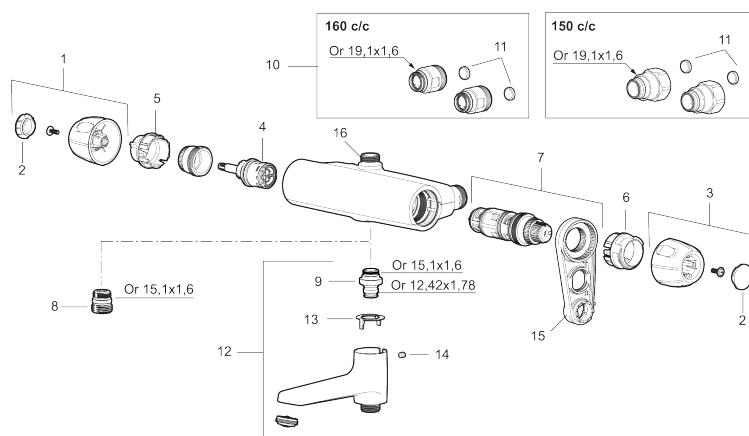
## 9000E shower mixer

An elegantly crafted mixer down to the finest detail. From the gleaming chrome finish to the pressure-balanced thermostat inside – every part is designed to provide you with an energy-efficient and stylish solution. You get a consistent temperature and smooth water flow in all situations, making it a safe and reliable choice for both young and old.

### About 9000E

Timeless, classic design with a range of smart, energy-saving features. That's why the 9000E series is the natural choice in so many homes and public spaces. A stylish way to save both water and energy. All mixers in the series are certified and comply with current building regulations.

Article number: 82108100



## Sparepartlist

| NO. | FMM NO. | RSK     | DESCRIPTION  |
|-----|---------|---------|--|
| 1   | S600334 | 8397049 | On/off handle, complete, krom                                |
| 2   | S600335 | 8397050 | End cover, black, 2 pcs                                      |
| 3   | S600333 | 8397048 | Temperature handle, complete, chrome                         |
| 4   | S600020 | 8441462 | Reversible headwork shower mixer 12 l/min, with service tool |
| 4   | S600269 | 8387232 | Reversible headwork shower mixer 12 l/min                    |
| 4   | S600021 | 8441463 | Reversible headwork 22 l/min, with service tool              |
| 4   | S600270 | 8387233 | Reversible headwork 22 l/min                                 |
| 5   | S600086 | 8439710 | Stop ring, for one outlet (down or up)                       |
| 6   | S600087 | 8439711 | Scalding protection ring, max 50°C                           |
| 6   | S600026 | 8439708 | Scalding protection ring, max 42°C                           |
| 7   | S600084 | 8439709 | Thermostatic cartridge, complete, incl. service tool         |
| 7   | S600271 | 8397030 | Thermostatic cartridge, complete, without service tool       |

| NO. | FMM NO.  | RSK     | DESCRIPTION                                   |
|-----|----------|---------|---|
| 8   | S600088  | 8439712 | Nipple M18x1–G1/2 for shower mixer            |
| 9   | 39754000 | 8591969 | Nipple M18x1 with o-ring for bath mixer       |
| 10  | 59800800 | 8592005 | Inlet connectors, 160 c/c                     |
| 11  | 38632006 | 8590311 | Filter  |
| 12  | S600077  | 8241000 | Swivel spout with integrated diverter, chrome |
| 13  | 38521000 | 8295345 | Stop ring                                     |
| 14  | 38086000 | 8439701 | Locking screw                                 |
| 15  | S600298  | 3870203 | Service tool                                  |
| 16  | 39710800 | 8591967 | Nipple M18x1-G1/2 for shower mixer            |