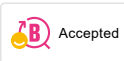
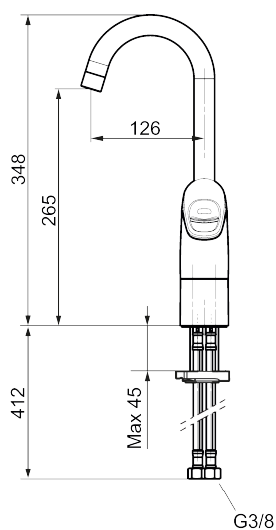




Unique characteristics



Backflow protection unit type



9000XE wash trough mixer

9000XE wash trough mixer is a mixer in chrome with a tall spout – suitable for fitting on wash troughs, e.g. in schools, changing rooms and workshops.

Article number: 86180010 **RSK:** 8447000 **Flow 3 bar:** 6.0 l/m

Description: Chrome

- Cold Start
- Ceramic cartridge with soft closing function
- Adjustable flow control and temperature limiter
- Fixed spout, or 360°
- Soft PEX® hoses with 3/8" connecting nut (stainless steel braided)
- Lead Free material
- Hole diameter Ø33,5–37 mm

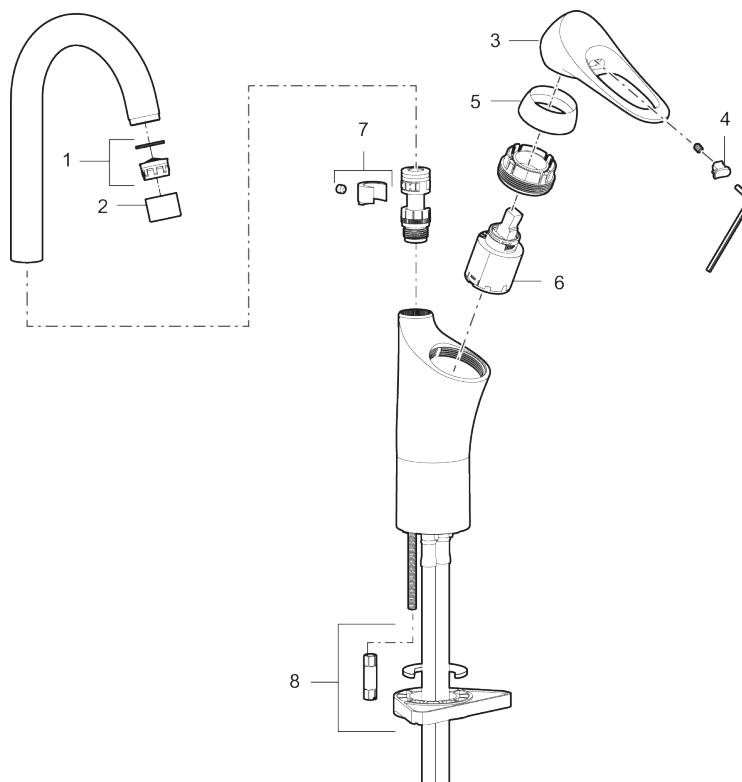
PRODUCT DESCRIPTION

9000XE wash trough mixer

9000XE wash trough mixer is a mixer in chrome with a tall spout – suitable for fitting on wash troughs, e.g. in schools, changing rooms and workshops.

Article number: 86180010

RSK: 8447000



Sparepartlist

NO.	FMM NO.	RSK	DESCRIPTION
1	29102910	8281534	Aerator insert, 5,5–6,5 l/min at 300kPa
2	S600155	8280012	Housing M22 int., chrome
3	S600096	8387022	Lever, complete, chrome
4	S600097	8387025	Cover lid with colour marking
5	S600101	8387029	Cover sleeve, chrome
6	S600098	8387026	Ceramic cartridge with tool, for kitchen mixers
6	S600209	8387039	Ceramic cartridge, without tool, for kitchen mixers
7	S600140	8387023	Stop screw with limitation segment, for fixed spout
8	S600159	8387097	Fastening kit, for kitchen mixer