



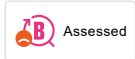
9000E bath mixer

An optimal fusion of design and function. The FM Mattsson 9000E range ushers in a new generation of mixers that are environmentally engineered down to the last detail. Even in its basic version, the mixer has our unique functions that ensure a constant water temperature and safe, reliable function. A new feature of these mixers is a cool mixer body. You'll never burn yourself on a 9000E mixer.

Article number: 82002504 **RSK:** 8343244

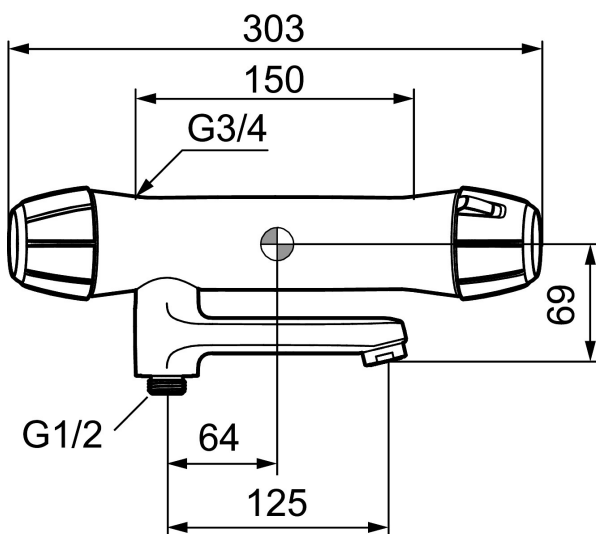
Description: Chrome, dark grey handles

Unique characteristics



- Pressure balanced thermostatic mixer
- Swivel spout with built-in diverter
- With ceramic sealed headwork
- Temperature handle with safety stop at 38°C
- Approved non-return valves, EN-Standard EN1717

Backflow protection unit type

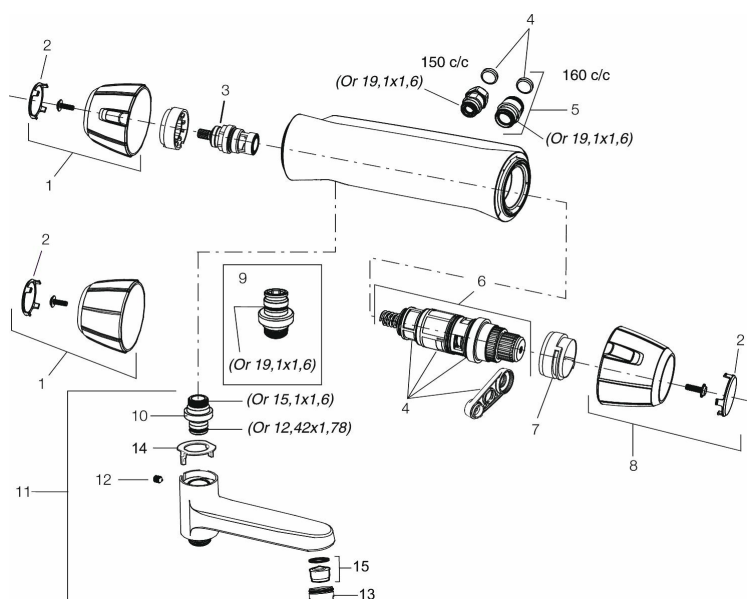


PRODUCT DESCRIPTION

9000E bath mixer

An optimal fusion of design and function. The FM Mattsson 9000E range ushers in a new generation of mixers that are environmentally engineered down to the last detail. Even in its basic version, the mixer has our unique functions that ensure a constant water temperature and safe, reliable function. A new feature of these mixers is a cool mixer body. You'll never burn yourself on a 9000E mixer.

Article number: 82002504 RSK: 8343244



Sparepartlist

| NO. | FMM NO. | RSK | DESCRIPTION |
|-----|----------|---------|------------------------------------------------------|
| 1 | 35781000 | 8592015 | On/off handle, complete, chrome |
| 1 | 35780040 | 8591995 | On/off handle, complete, black |
| 2 | 39031004 | 8592004 | Cover, black, 2 pcs |
| 3 | S600274 | 8397028 | Ceramic headwork (G15) |
| 4 | 38680009 | 8591701 | Filter kit incl. o-rings and service tool |
| 5 | 59810800 | 8592006 | Inlet connectors 150 c/c (left-handed thread) |
| 5 | 59800800 | 8592005 | Inlet connectors, 160 c/c |
| 6 | S600275 | 8397029 | Thermostatic cartridge, complete, incl. service tool |
| 7 | S600311 | 8397045 | Scalding protection ring (standard), black |
| 7 | 38520005 | | Scalding protection ring, max 38 °C, black |
| 8 | 35780100 | 8591998 | Temperature handle, complete, chrome |
| 8 | 35780140 | 8591997 | Temperature handle, complete, black |
| 9 | 39710800 | 8591967 | Nipple M18x1-G1/2 for shower mixer |
| 10 | 39754000 | 8591969 | Nipple M18x1 with o-ring for bath mixer |

| NO. | FMM NO. | RSK | DESCRIPTION |
|-----|----------|---------|----------------------------------------|
| 11 | 82990000 | 8154073 | Swivel spout with integrated diverter |
| 12 | 38086000 | 8439701 | Locking screw |
| 13 | 29142400 | 8281526 | Housing M24 ext., 13 mm |
| 14 | 38521000 | 8295345 | Stop ring |
| 15 | 29102650 | 8281547 | Aerator insert, 20–24 l/min at 300 kPa |