
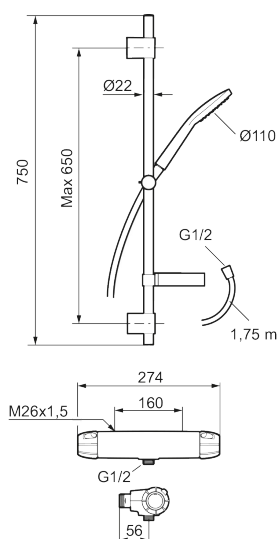




## Unique characteristics



Backflow protection unit type 



## 9000E shower kit

This set has everything you need for a comfortable and refreshing shower experience. It includes an energy-efficient mixer in a timeless design, a shower rail with a hand shower, and a shelf for soap and shampoo. The mixer ensures a smooth water flow and maintains a consistent temperature in all conditions—safe and reliable for both young and old.

The mixer features an Eco-stop function that automatically reduces water consumption. For a higher flow, simply press the Eco function button. The mixer meets energy class A standards.

### About 9000E

Timeless, classic design with a range of smart, energy-saving features. That's why the 9000E series is the natural choice in so many homes and public spaces. A stylish way to save both water and energy. All mixers in the series are certified and comply with current building regulations.

**Article number:** 82172000 **RSK:** 8283637 **Flow 3 bar:** 7.6 l/m

**Description:** Chrome, 160 c/c

- Note! 160 c/c
- Pressure balanced thermostatic mixer with shower set
- Eco Flow
- Temperature handle with safety stop at 38°C
- With Eco-function
- Approved non-return valves, EN-Standard EN1717
- Shower set has anti lime-scale hand shower, shower bar with slider, soap dish and wall brackets with sealing