

## 9000E shower mixer

An elegantly crafted mixer down to the finest detail. From the gleaming chrome finish to the pressure-balanced thermostat inside – every part is designed to provide you with an energy-efficient and stylish solution. You get a consistent temperature and smooth water flow in all situations, making it a safe and reliable choice for both young and old.

### About 9000E

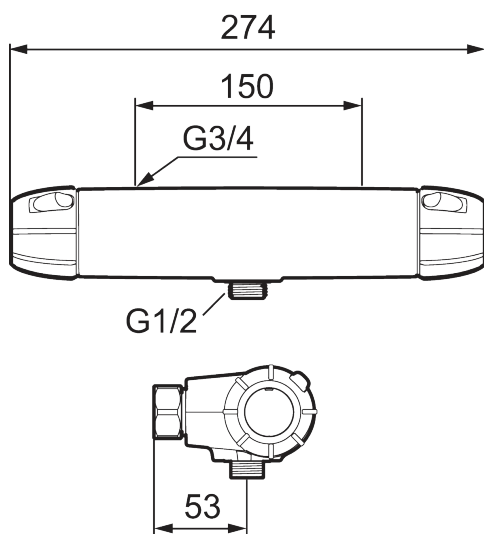
Timeless, classic design with a range of smart, energy-saving features. That's why the 9000E series is the natural choice in so many homes and public spaces. A stylish way to save both water and energy. All mixers in the series are certified and comply with current building regulations.

**Article number:** 82108100 **Flow 3 bar:** 22.9 l/m

**Description:** Chrome, 150 c/c

### Unique characteristics

Backflow protection unit type



- With shower connection down
- Pressure balanced thermostatic mixer
- With ceramic sealed headwork
- Temperature handle with safety stop at 38°C
- With Eco-function
- Approved non-return valves, EN-Standard EN1717