

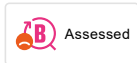
GARDA shower mixer

FM Mattsson Garda is an intelligent bath and shower mixer that perfectly juxtaposes clean, elegant design with outstanding function. In addition to familiar functions such as constant water temperature and guaranteed function even if your water is hard, the mixer has an intelligent energy saving function and an upgraded hot water lock.


Article number: 96801530

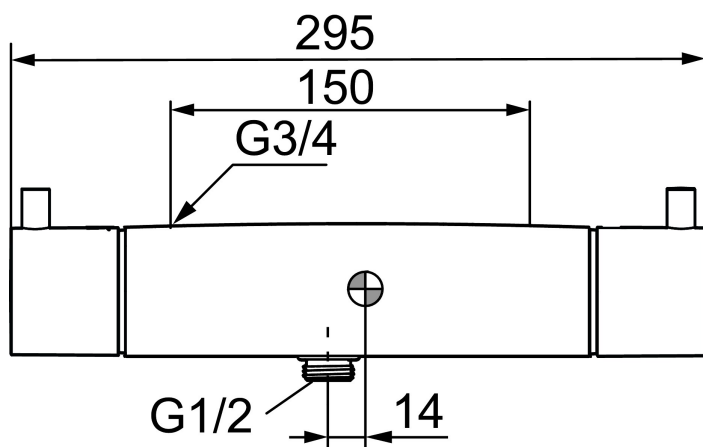
Description: Chrome, 150 c/c

Unique characteristics



- With shower connection down
- Pressure balanced thermostatic mixer
- With ceramic sealed headwork
- Temperature handle with safety stop at 38°C
- With Eco-function
- Approved non-return valves, EN-Standard EN1717

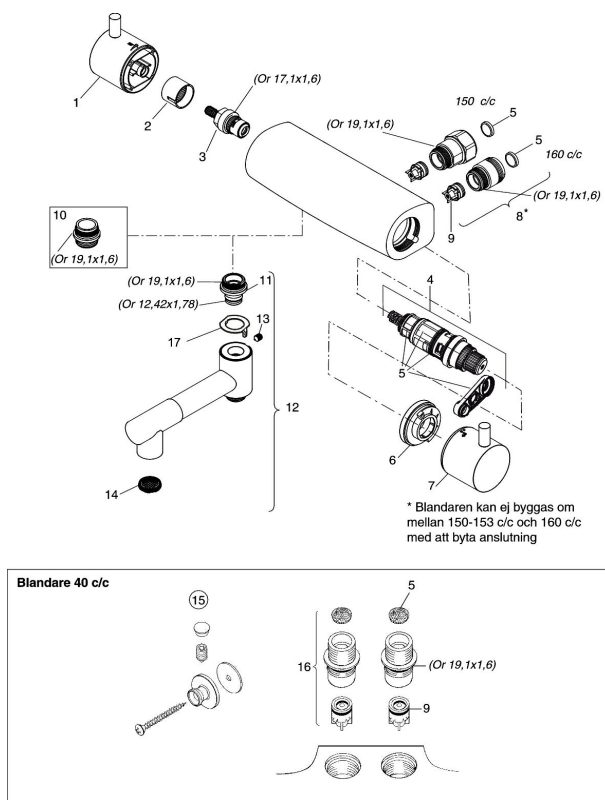
Backflow protection unit type 



PRODUCT DESCRIPTION

GARDA shower mixer

FM Mattsson Garda is an intelligent bath and shower mixer that perfectly juxtaposes clean, elegant design with outstanding function. In addition to familiar functions such as constant water temperature and guaranteed function even if your water is hard, the mixer has an intelligent energy saving function and an upgraded hot water lock. Article number: 96801530



Sparepartlist

| NO. | FMM NO. | RSK | DESCRIPTION |
|-----|----------|---------|--|
| 1 | 35730000 | 8591928 | On/off handle |
| 2 | 35710000 | 8591929 | Eco indicating sleeve |
| 3 | 35900000 | 8586325 | Ceramic on/off headwork |
| 4 | 38601009 | 8591609 | Thermostatic cartridge, complete, incl. service tool |
| 5 | 38680009 | 8591701 | Filter kit incl. o-rings and service tool |
| 6 | 59590000 | 8591930 | Scalding protection ring |
| 7 | 35740000 | 8591931 | Temperature handle |
| 8 | 59800000 | 8591543 | Inlet connectors, 160 c/c |
| 8 | 59810000 | 8591544 | Inlet connectors 150-153 c/c (left-handed thread) |
| 9 | 29830529 | 8591702 | Non-return valves, 2 pcs |
| 10 | 39710000 | 8591571 | Nipple M22x1-G1/2 for shower mixer |

| NO. | FMM NO. | RSK | DESCRIPTION |
|-----|----------|---------|--|
| 11 | 39753000 | 8591516 | Nipple for spout |
| 12 | 96990000 | 8154058 | Swivel spout with integrated diverter |
| 13 | 38086000 | 8439701 | Locking screw |
| 14 | 59552410 | 8242172 | Aerator M24 ext., without air admixture |
| 15 | 29712000 | 8591530 | Wall bracket for 40 c/c mixers, complete |
| 16 | 59820000 | 8591545 | Inlet connector for 40 c/c mixer |
| 17 | 38521000 | 8295345 | Stop ring |